





STANEX PORTEX LITEX

Transport cases





EDAK, excellence in aluminum

EDAK is a medium sized globally active company with two manufacturing sites in Switzerland and USA certified to ISO 9001:2000 and a sales network in Europe, USA as well as in Australia, Far East and India. EDAK AG in Switzerland was founded in 1949 and is located in Dachsen, 40 km north of Zurich airport. EDAK Inc. in Melbourne Florida USA near Kennedy Space Center was founded in 1986.

With a well-trained and highly productive staff, EDAK designs and manufactures transit and transport cases exclusively in aluminum. All EDAK aluminum cases are engineered to withstand the severity of field operations, military, and commercial transport usage. We design and manufacture both standard and nonstandard aluminum transit cases for rack and flange mount electronic equipment needing protection from a variety of elements such as shock, vibration, water, dust, etc. EDAK also fabricates cases for general transport purposes.

We manufacture all cases to your exact specification, irrespective of lot size. Since we use an aluminum sheet shell process we are not restrained by sizing limitations inherent in plastic molds or deep drawn aluminum cases that use a die process. This advantage is utilized across all EDAK case lines. You never have to settle for the adjacent size. With EDAK you can achieve the smallest possible footprint with the highest level of protection.

With the EDAK range of transport cases, we cover all needs for the safe transport and storage of your valuable goods.

Contents

	Page
STANEX, lasting protection	4
STANEX transport case	5
PORTEX handheld cases	8
PORTEX briefcase	9
PORTEX instrument case	11
LITEX value case	12



STANEX, lasting protection

STANEX is a range of reinforced aluminum alloy cases with IATA certification for the transport of hazardous goods.

The unique design of the STANEX case results in the special ruggedized features. Specially formed galvanized steel corner elements provide the most positive vertical stacking capability around. The rubber grip, spring-loaded drop handles can support a 50 kg load each. Secure closing is provided by specially designed stirrup latches which have padlock fittings. This guarantees the safety and security of your equipment. Your problems are over when packed in a STANEX transport case.



STANEX transport case

The STANEX case is constructed of a special lightweight salt-water resistant aluminum alloy. Custom sizes are easily handled since our cases are not molded or deep drawn. STANEX cases are spray water tight. Stanex cases have IATA approval UN 4B1/ Y120/S/ 89/CH2659/EDAK for air shipment of hazardous cargo and offer IP54 protection against dust and moisture.



Standard sizes are as follows:

Type	External dimension (LxWxH – in mm)	Internal dimension (LxWxH – in mm)	Clearance (LxW – in mm)	Number of handles	Weight (in kg)
EF 4305	605 x 415 x 254	570 x 380 x 217	530 x 340	3	6.5
EF 4310	605 x 415 x 500	570 x 380 x 463	530 x 340	2	8.3
EF 4315	825 x 605 x 254	790 x 570 x 217	753 x 530	4	12.1
EF 4320	825 x 605 x 500	790 x 570 x 463	753 x 530	4	15.3

Features



STACKING WEIGHT LOAD

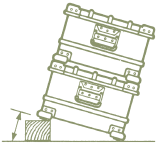
STANEX cases can withstand a stacked load of 1200 kg.

STACKING TEST

Two cases can be tilted to an angle of 15 degrees without lateral slip.

CARRYING HANDLES

The number of carrying handles is optional. Load capacity of each handle is 50 kg. A rubber grip is provided for user comfort. The handles are securely mounted with rivets.

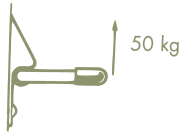


STIRRUP LATCHES

Specially designed stirrup latches are used to ensure positive fastening and secure locking of the lid.

SPRAY WATER AND DUST TEST

Spray water and dust protection conforms to test standard EN60529.



DROP TEST

STANEX lightweight aluminium cases containing a net weight of 100 kg can withstand a fall from 120 cm onto a hard surface without sustaining damage which impairs normal function.



CORNER REINFORCEMENTS

Galvanized steel corner reinforcements are riveted to the case bottom and covers to provide additional strength, protection and positive stacking.

FOAM LINING

We offer general foam lining with a thickness of 25 mm to 50 mm, or with cushioning configured specifically for your payload based on the fragility and dimension of the equipment.



STACKING WEIGHT LOAD

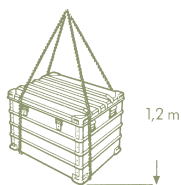
STANEX cases can withstand a stacked load of 1200 kg .

FINISH

Natural aluminum or painted finish available.

SIZES

Many standard sizes are available from our catalog and of course custom requirements.



Areas of application

The STANEX transport case is unsurpassed for dependable storage and transportation in any environment. Because of our ability to manufacture any size in any quantity we can supply the case to your exact requirements. STANEX transport cases are used for commercial and military applications around the world.

Examples where STANEX transport cases are used for storage and transportation:

- Test equipment
- Mobile communication equipment
- Tools
- Spare parts
- Laboratory appliances
- Medical instruments, field hospitals
- Delicate instruments
- Dangerous goods
- Valuables
- Currency



PORTEX handheld cases

8

The PORTEX briefcase combines an attractive design with clean lines and rugged durability. It is built for high mobility where its tough design and lightweight construction is appreciated. It is ideal for use as a sample case and for safe transport of valuable electronics or instruments.

The outer shell is made from aluminum. An internal mounting flange is available for installation of electronics panel or instrument panel. Due to minimal corner radii the PORTEX briefcase offers optimal useable space in relation to case size.

For customizing the case can be foam lined. Several foam lining materials are available. As with all of our cases, the PORTEX briefcase can be built to suit in size, lining and accessories.

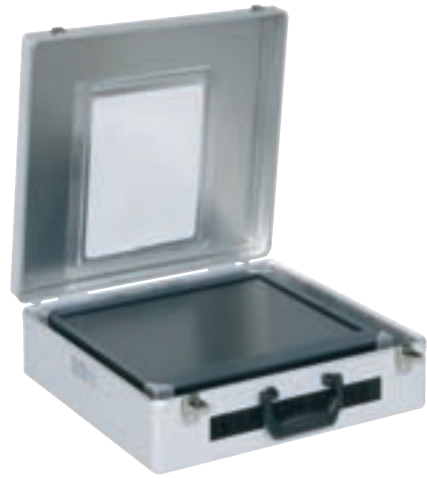
The PORTEX instrument case is designed with the most demanding needs for protection of sensitive equipment in scientific, military, marine, medical, agriculture or geophysical applications during field applications and transport in mind. To protect instruments in transit or operation in hostile environments, PORTEX instrument cases meet or beat most required specifications. They are available in a wide range of sizes and options.



PORTEX briefcase

The PORTEX briefcase is designed to protect items such as small instruments, tools, cameras, anything that needs to be hand-carried and which would be damaged in a soft case. Also, mobile instruments such as sophisticated GPS devices.

The PORTEX briefcase is designed with internal modification in mind. It uses the same aluminum sheet shell process as our other cases. As standard product we offer two sizes and two distinct finishes. We can modify to accommodate interior brackets, mounts, compartments, and markings such as silk screening. Custom designed partitions and fold-down dividers are available. The cover can also be made removable.



Features

PROTECTION

- Climatic stress such as rain, snow, hail, humidity, heat and blowing dust and sand
- Minor shock & vibration with the use of a foam lining
- Electro Static Discharge with the use of ESD rated foam

CHARACTERISTICS

- Rugged aluminum construction
- Chrome plated ball type closure
- Luggage type handle
- Moisture proof
- Corrosion resistant piano type hinge with stainless steel pin

WEATHERPROOFING

- Interlocking tongue & groove extrusion for watertight protection

FINISH

- Natural aluminum or hammered finish that resists scratching
- Several foam materials are available, including ESD
- Rigid aluminum partitions are also available



Standard sizes available

Type	Finish (Surface)	Dimension external (L x W x H – in mm)	Dimension internal (L x W x H – in mm)	Weight (in kg)
EF 2118	Natural	456 x 360 x 131	450 x 330 x 128	3.2
EF 2119	Natural	526 x 380 x 182	520 x 350 x 179	3.6
EF 2141	Texture	456 x 360 x 131	450 x 330 x 128	2.6
EF 2142	Texture	526 x 380 x 182	520 x 350 x 179	3.0

PORTEX instrument case

The PORTEX instrument case is extremely rugged, versatile and waterproof, offering the widest ranges of sizes and options available, with both short lead times and low cost. They are ideal for the safe transportation and field operation of delicate equipment for commercial, industrial and military use.

Design characteristics

- Meets all applicable requirements of MIL-28800, performance levels of MIL-STD-810, and the watertight requirements of IP65
- Protection of latches and hardware is achieved through the use of guarded latches and handles or by incorporating “V” rails along the perimeter of the case.
- Widest range of sizes available
- Can be configured to exact size required, unlike deep-drawn cases
- Shock and vibration isolation options are available
- Offers many special features that help ensure the safe delivery of intricate instruments in transit and operation in hostile environments.

Special features

- Stirrup latches are used to insure positive fastening and security locking of lid
- Flange available for mounting instruments and electronics
- Available with foam interiors engineered to your specifications
- Spring loaded recessed top and side handles
- Pressure relief valve manual or automatic
- Custom design requirements are easily incorporated to accommodate special connectors, hardware, etc.



Litex value case

The LITEX value case offers an economical solution to your transport and storage needs. It has an excellent volume to weight ratio. It is manufactured of the same lightweight aluminum alloy as the STANEX case. LITEX value cases stack on top of each other and the standard sizes are dimensioned for the cases to fit on a Euro pallet.

Besides the standard sizes, we will make sizes to suit your requirements in any quantity. The LITEX value case can also be customized by fitting foam lining or inserts and by painting to your needs.



Features



The LITEX value case comprises a body and a hinged lid. The body has a perimeter reinforcement around the aperture. The container is fitted with one or two stirrup catches (according to size). A turn screw device ensures that the catches are shake proof. One, two or four spring handles with plastic grips (according to size of case) are riveted to the case body. Maximum weight loading is 40 kg on each handle.

Painting

Plain or painted finish. All RAL colours are available. The modular sizes of LITEX value cases mean that models with different standard dimensions will all fit on a Euro pallet.



Standard sizes available

Type	External dimension (L x W x H – in mm)	Internal dimension (L x W x H – in mm)	Clearance (L x W – in mm)	Number of handles	Number of latches
EF 3001	400 x 300 x 340	383 x 272 x 300	375 x 264	1	1
EF 3002	600 x 400 x 220	571 x 372 x 188	563 x 364	2	2
EF 3003	600 x 400 x 400	571 x 372 x 368	563 x 364	2	2
EF 3004	800 x 600 x 220	773 x 572 x 188	765 x 564	4	2
EF 3005	800 x 600 x 400	773 x 572 x 368	765 x 564	4	2

Other sizes on request



Impressum

Text: EDAK AG, FD, 1200, August 2005

Images: Croci & du Fresne Fotografie, Bern

Concept/Design: MASCIADRI Communication & Design, Bern

